

***I want support,  
what do I do  
next?***

Simply call our centre and a staff member will hear your story, we'll gather some details, and link you to a worker or service that suits you.

We respect all people and cultures and can make this pamphlet available in other languages or formats.

Check our website for more details  
[www.hopeconnect.org.au](http://www.hopeconnect.org.au)



Hope Connect Inc acknowledge that we are here today on the land of the Darug people. The Darug people are the Traditional Owners of this land. Hope Connect Inc also acknowledges the present Aboriginal and Torres Strait Islander people, who now reside within this area.



#### **Opening Hours**

Monday - Thursday: **9am to 4pm**

Closed for lunch 12.30 - 1pm

Friday: Closed

#### **Donations**

If you would like to help us to provide these services, donations over \$2 are tax deductible.

Details on how to give are on our website.

#### **Contact Information**

16 Shortland Street, Telopea 2117

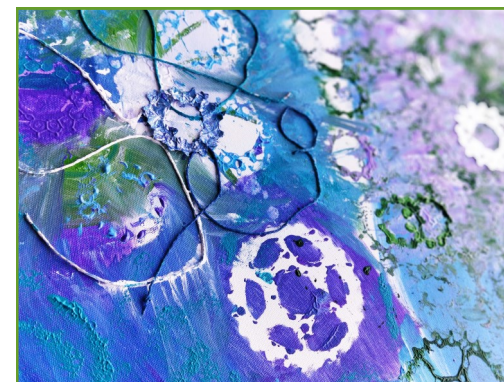
Phone: 9638 7955

Email: [admin@hopeconnect.org.au](mailto:admin@hopeconnect.org.au)

Website: [www.hopeconnect.org.au](http://www.hopeconnect.org.au)



***A support service that is  
here to walk alongside you***



***Everyone needs support at  
some points in life...***

# There are many ways we can support you

## TARGETED EARLY INTERVENTION PROGRAM FOR FAMILIES AND YOUTH 0 – 17 YEARS

- Individual support plans
- Advice & support
- Counselling
- Parenting programs
- Information, referral, advocacy and liaison with other services.
- Home and community visits
- Experienced and skilled family case worker to work alongside you, your family and young people

## INTENSIVE FAMILY PRESERVATION PROGRAM

DCJ REFERRED

This program is for families who need a more extensive level of support

- Individual support plans with full time allocated family workers
- Advice & support
- Counselling
- Parenting programs
- Information, referral, advocacy and liaison with other services
- Home and community visits
- Experienced and skilled family case worker to work alongside you, your family and young people
- Out of hours support

## PLAY N GROW PLAYGROUP

This is a supported playgroup for parents and carers. Children will have fun with singing, craft, indoor and outdoor play areas.

It is a fun environment for the children and a great opportunity to meet other parents and carers in your local area, and hear parenting strategies that may support you along the way.

## PARENTING EDUCATION PROGRAMS

Each term we run parenting groups on topics that are relevant to local families and teens. The sessions are typically 6 - 8 weeks, practically focused, and aimed at all learning levels. Single session topics are also offered, see the website or contact us for details.

*"Thanks for your feedback, coordinating and organising of such a courageous and inspiring program"*

## MATERIAL AID

Practical support is available in the form of food parcels, food vouchers, EAPA (electricity and gas and vouchers). An appointment is required.

## NO INTEREST LOANS SCHEME

Loans are available for essential goods and services for up to \$2,00, these include whitegoods, homewares, health care and study needs.

An appointment is essential and specific paperwork to be supplied prior to appointment.



## TELOPEA SHED

Telopea Shed is a place for men and women to explore their creativity in woodwork, home maintenance, carpentry and small projects.

Our shed is a place where we can learn new skills and demonstrate our own. Both experienced and those new to sheds are welcome.

We have a fully equipped work shop.

We want those who join us to feel safe in the sharing of life together, to feel understood and to know that life is worthwhile.

Wednesday & Saturday  
9am to 12pm

Cnr Wade & Shortland Street  
Telopea NSW 2117